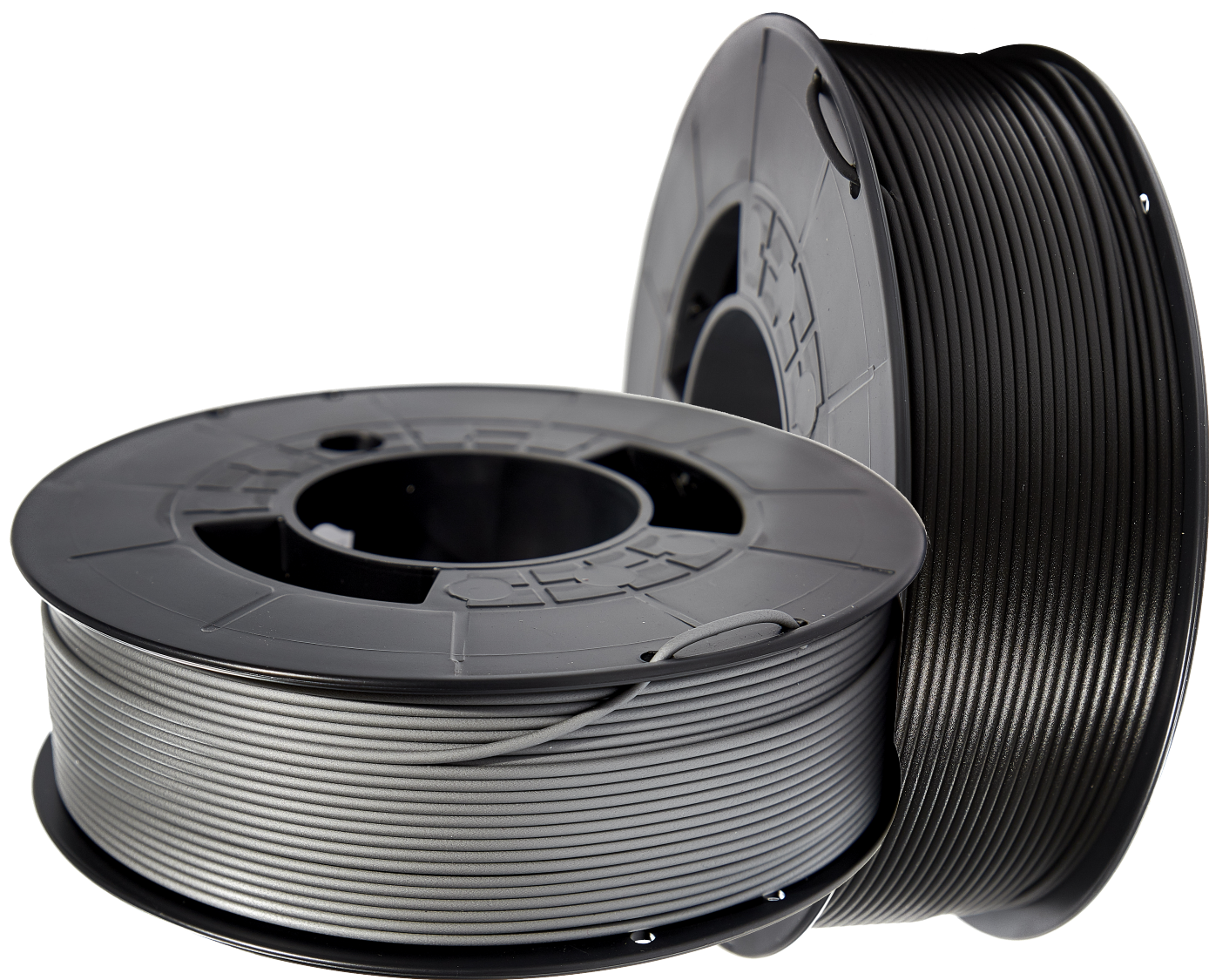


PLA HD RE - RECYCLED

This collection is called “RE” because is compromised with the “reduce, reuse, recycled” principles. Recycled filament for printers.



CHARACTERISTICS

Available colours:



Light and dark

Available diameter: 1.75mm

Size of the spool: 1kg

Note:

- Print with a nozzle of 0.4 or 0.6
- We recommend you to print a temperature tower to choose the colour you want

GENERAL PRINT SETTINGS:

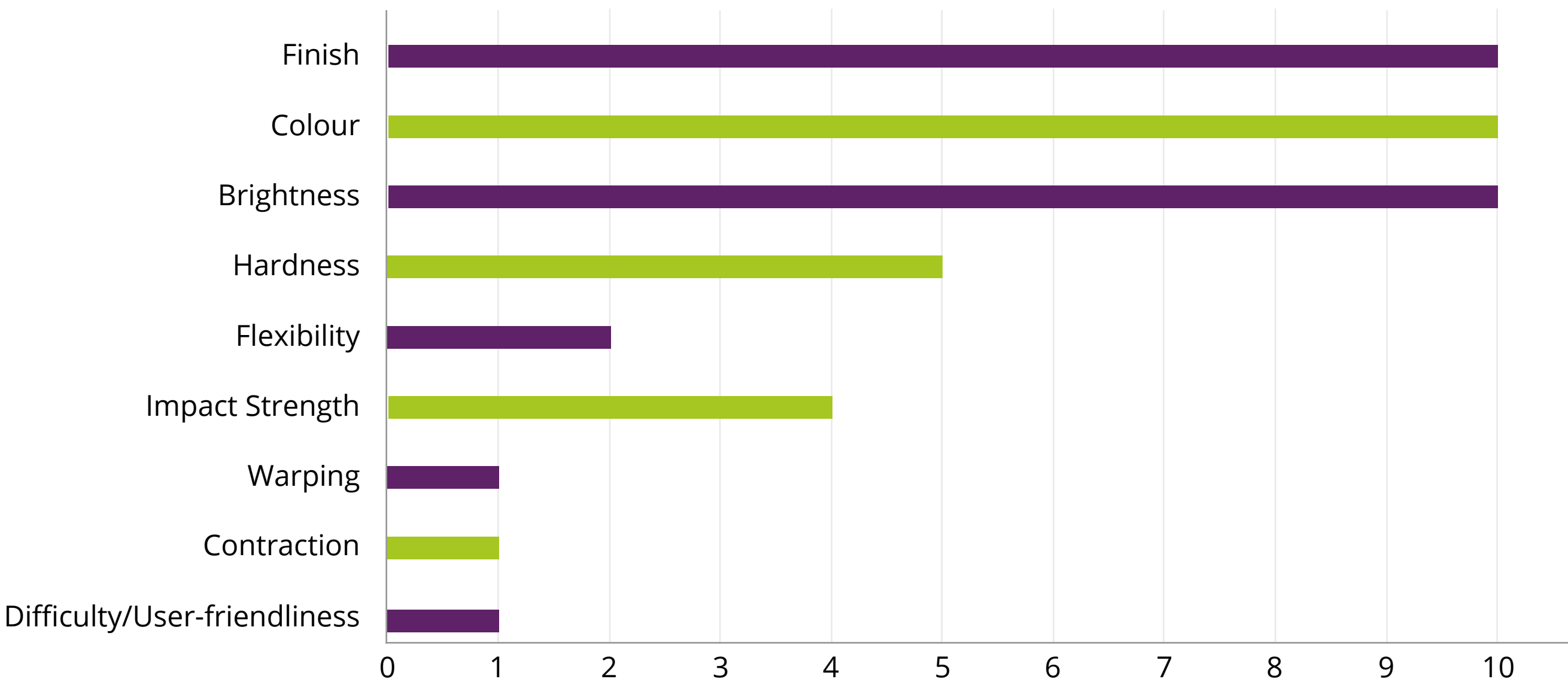
Nozzle Temperature:

Between 240° and 260°C

Bed Temperature:

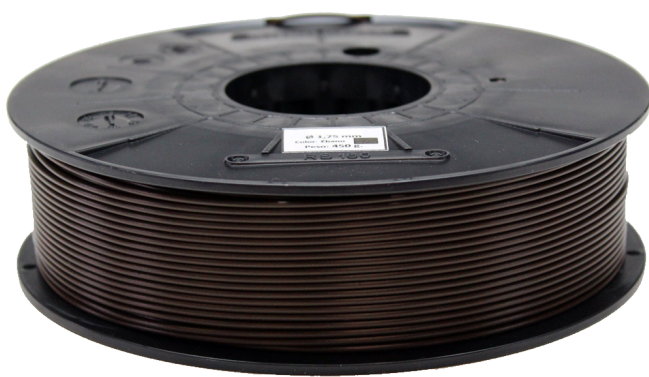
Between 70° and 100°C

Easy to print and nice adhesion between layers

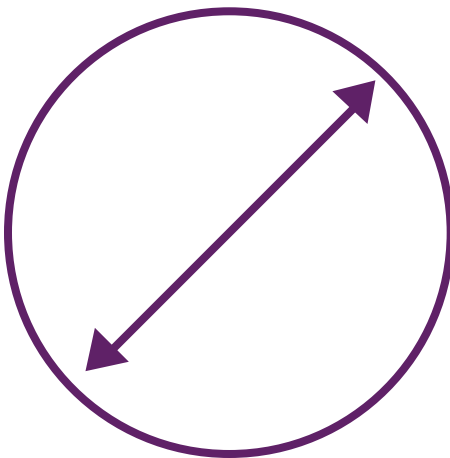


⚠️ PRINT IN A VENTILATED PLACE

QUALITY WARRANTY OF WINKLE’S PETG FILAMENT



Better spooling



Constant diameter

Ø 1,75 mm  
± 0,05 mm



Cardboard box, vacuum-bag and silica

\*The indicated parameters are valid for correctly calibrated printers (P&D, mechanical and fuser)  
\*Supervised and tested manufacturing process (diameter, colour and winding) to guarantee the quality of our product