

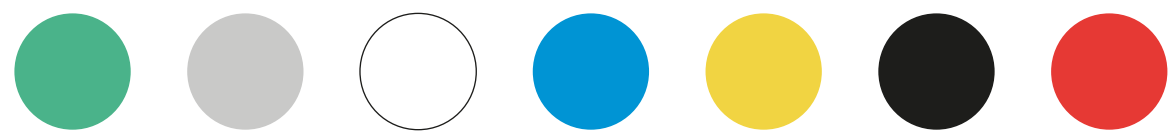
PLA IE 870 - INDUSTRIAL ENGINEER

It has the same printing properties as ABS, but with the easiness of PLA. Maximum strength and maximum finish quality.



CHARACTERISTICS

Available colours:



Avocado Green, Ash Grey, Glacier White, Pacific Blue, Canary Yellow, Jet Black and Devil Red.

Available diameter: 1.75mm and 2.85mm
Size of the spool: 300g and 1kg

Also available (on request):
3 Kg, 5 Kg and 8Kg

GENERAL PRINT SETTINGS:

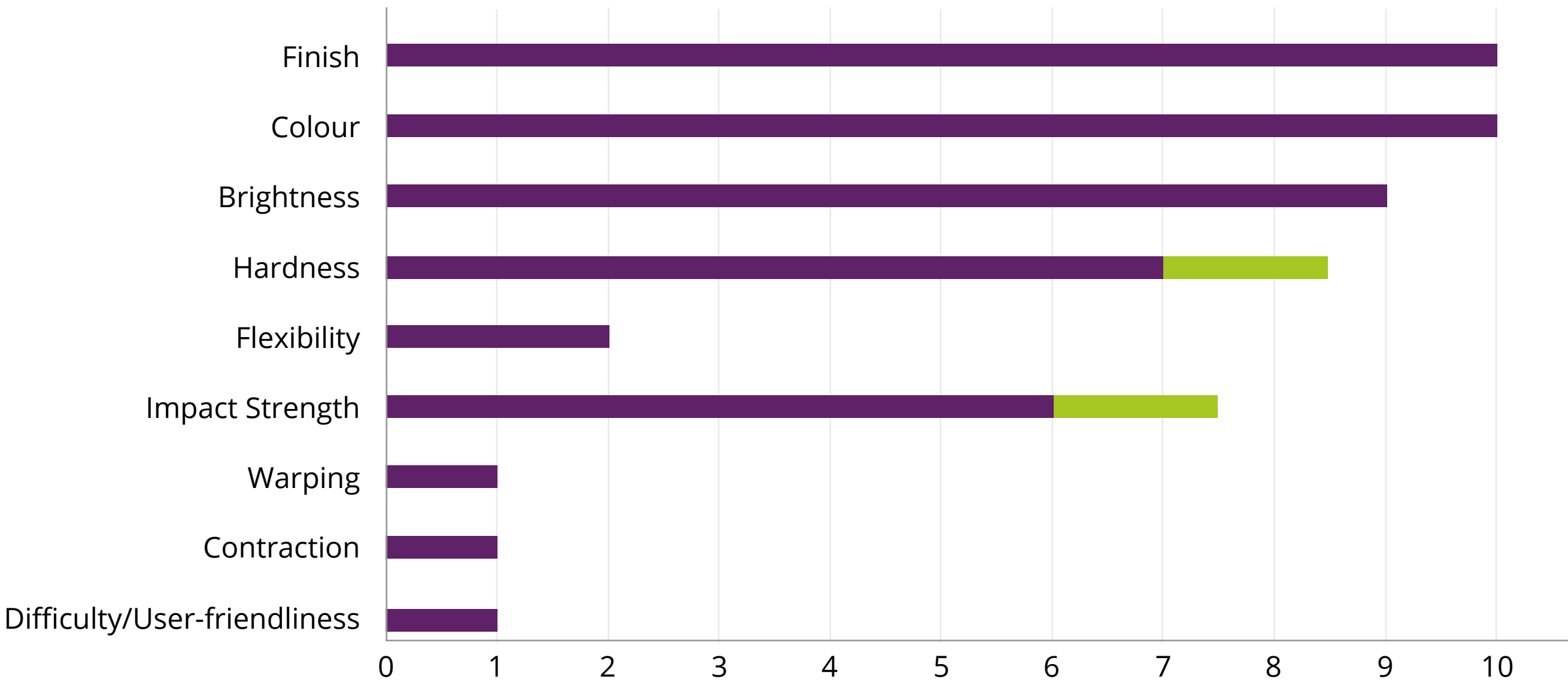
Nozzle Temperature:

Between 200° and 230°C

Bed Temperature:

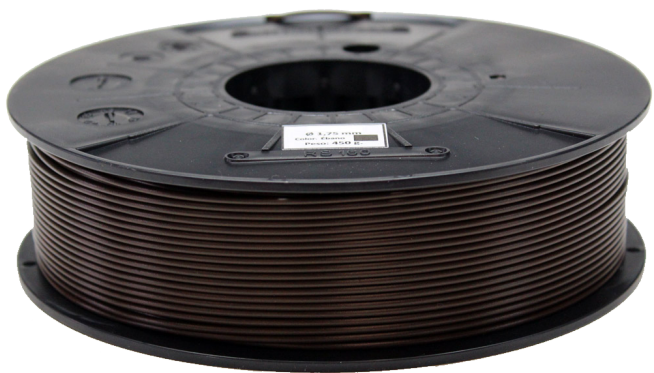
Between 50° and 60°C

We recommend using a hot bed adhesive

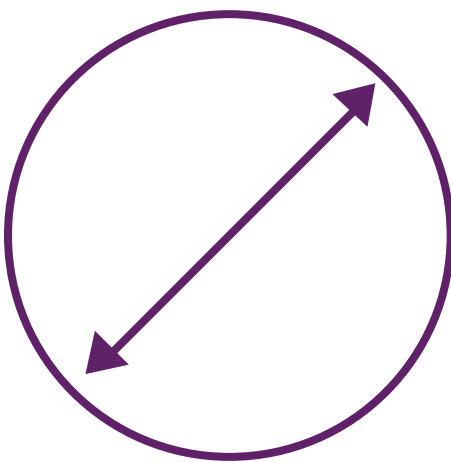


⚠️ PRINT IN A VENTILATED PLACE

QUALITY WARRANTY OF WINKLE’S PLA IE 870 FILAMENT



Better spooling



Constant diameter

Ø 1,75 mm
± 0,05 mm



Cardboard box, vacuum-bag and silica

*The indicated parameters are valid for correctly calibrated printers (P&D, mechanical and fuser)
*Supervised and tested manufacturing process (diameter, colour and winding) to guarantee the quality of our product
*Change to green colour in the chart is due to the baking process of the material