

PLA HD RE - RECYCLED

This collection is called “RE” because is compromised with the “reduce, reuse, recycled” principles. Recycled filament for printers.



CHARACTERISTICS

Available colours:



Light and dark

Available diameter: 1.75mm

Size of the spool: 1kg

Note:

- Print with a nozzle of 0.4 or 0.6
- We recommend you to print a temperature tower to choose the colour you want

GENERAL PRINT SETTINGS:

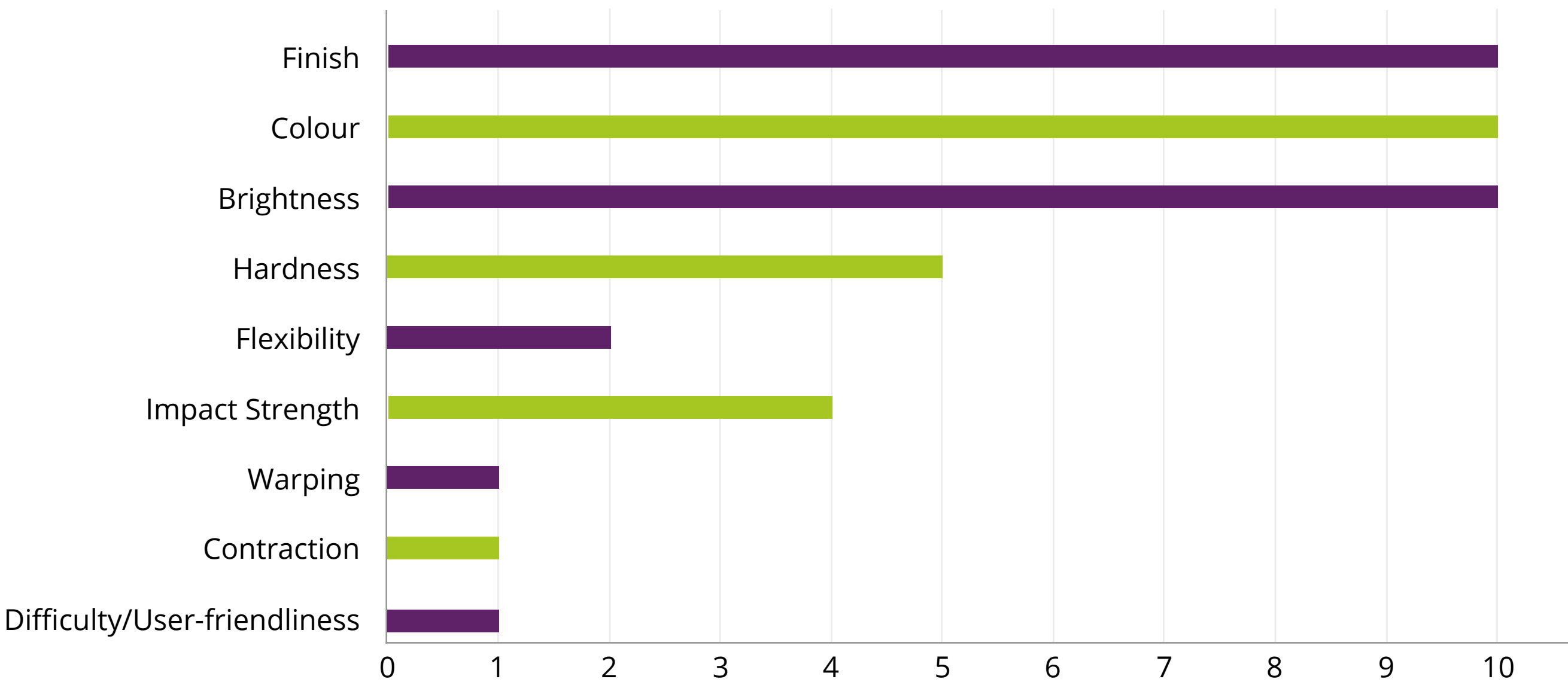
Nozzle Temperature:

Between 200° and 230°C

Bed Temperature:

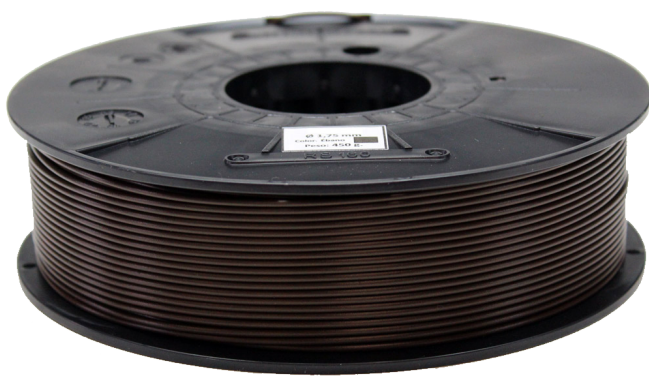
Between 50° and 60°C

Excellent hot bed adhesion between layers.

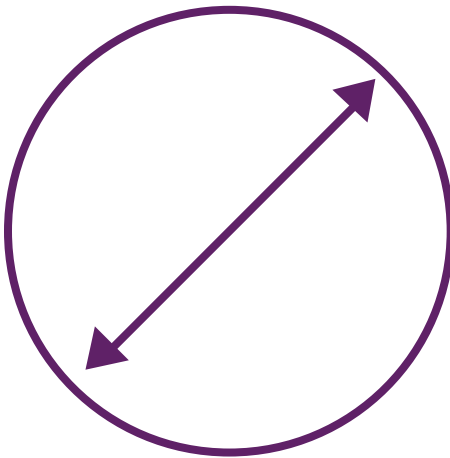


PRINT IN A VENTILATED PLACE

QUALITY WARRANTY OF WINKLE’S PLA - HD FILAMENT



Better spooling



Constant diameter

Ø 1,75 mm  
± 0,05 mm



Cardboard box, vacuum-bag and silica

\*The indicated parameters are valid for correctly calibrated printers (P&D, mechanical and fuser)

\*Supervised and tested manufacturing process (diameter, colour and winding) to guarantee the quality of our product